

PrimaCover Combi

Universal, liquid proof protection fleece.The light, absorbent spun-bonded fabric has a strong impermeable film on the underside. Suitable for building, finishing, renovation, industry, workshops, spray booths, painting work, ship maintenance etc.

- Properties:
- Does not curl up
 - Absorbent
 - Liquid proof
 - Wear- and tear resistant
 - Lint-free

- Application:
- For all completely dry surfaces



Light

0,98m x 50m # 900047

PrimaCover Carpet

Firm, self-adhesive liquid proof film for reliably covering carpet on floors and stairs during project fitting, building work, finishing, renovation and painting. Can be easily removed without leaving glue residues.

- Properties:
- Especially for textile floor coverings
 - Self-adhesive
 - Easy to remove
 - For floors and stairs
 - Thickness 50µm or 100µm



For carpet

0,625m x 100m (50µm) # 900087 | 0,625m x 100m (100µm) # 900089 | 1,25m x 100m (50µm) # 900782

PrimaCover Hardfloor

Firm, self-adhesive and liquid proof film for reliable protection of hard surfaces. Suitable for floors and stairs. Protects against slight damage and spilt materials. Ideal for project fitting, building work, finishing and painting.

- Properties:
- Especially for hard floors
 - Self-adhesive
 - Easy to remove
 - For floors and stairs
 - Thickness 50µm



For hard surfaces

0,625m x 100m # 900664

PrimaCover Glass

Translucent protective film with UV-resistant adhesive for flat glass. Provides out-standing protection for numerous applications, such as building work, plastering and painting. Available in blue and transparent version.

- Properties:
- Self-adhesive
 - Easy to use
 - Translucent
 - Usable for up to 4 weeks
 - Thickness 50µm



For windows and glass

blue: 1m x 100m # 900578 | 0,50m x 100m # 900020 | 25cm x 100m # 900701
transparent: 0,50m x 100m # 900611

PrimaCover Protection Board

Universal cardboard floor protection. Ideal for finishing and renovation work such as plastering, sprayed-on plaster and painting. Protects against dirt, moisture and mechanical damage.

- Properties:
- Non-slip upper side
 - Blank version, without print
 - Made of first-class wood fibres
 - contains no plastic coating, 100% recyclable



Sustainable cardboard floor protection

50m² ±130cm 150-200gr/m² # 900092 | 50m² ±70cm 150-200gr/m² # 900633

PrimaCover Synthetic

PrimaCover Synthetic is a protection fleece that safely and effectively protects synthetic floors during work activities, without leaving damage or adhesive residue.

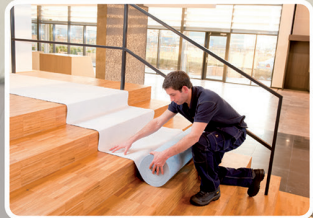
- Properties:
- Liquid proof
 - Impact absorbing
 - Self-adhesive
 - Re-usable

- Application:
- for thoroughly dried synthetic floors
 - Suitable for Laminate, PVC, Vinyl etc.



1m x 25m # 900813

PrimaCover application table	PrimaCover Lite	PrimaCover Basic	PrimaCover Standard	PrimaCover Robust	PrimaCover Active	PrimaCover Evapo	PrimaCover Paint	PrimaCover Absorb	PrimaCover Carpetsaver	PrimaCover Hardfloorsaver	PrimaCover Standard FR	PrimaCover Defend	PrimaCover Combi	PrimaCover Carpet	PrimaCover Hardfloor	PrimaCover Glas	PrimaCover Protection Board	PrimaCover Synthetic
hard surfaces, recently installed or treated					•	•						•						
hard surfaces	•	•	•	•	•	•	•	•		•	•	•	•		•		•	•
precast concrete elements				•	•	•						•						
textile floor coverings (carpet/carpet tiles)									•			•		•				
glass																•		



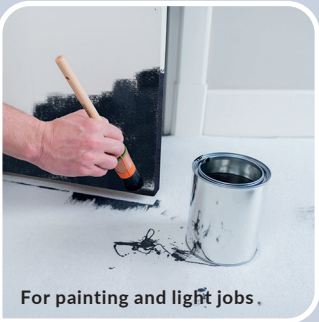
Temporary protection materials
for construction, finishing and renovation

PrimaCover Lite

Self-adhesive lightweight and liquid proof floor protection for completely dry hard floors. Provides adequate protection during light work. Therefore suitable for situations with a relatively low risk of damage. Think of painting and light jobs.

- Properties:
- Liquid proof
 - Self-adhesive
 - Re-usable
 - Made from recycled polyester fibres

- Application:
- For all completely dry floors



For painting and light jobs.

1m x 25m # 900718

PrimaCover Basic

Protects against moisture and dirt on various dry surfaces. PrimaCover Basic fulfills the main general requirements for application e.g. in renovation and maintenance work.

- Properties:
- Liquid proof
 - Impact absorbing
 - Re-usable
 - Self-adhesive
 - Made from recycled polyester fibres

- Application:
- For all completely dry surfaces
 - Suitable for floors and stairs



For light to medium jobs (140gr/m²)

2m x 50m # 900010 | 1m x 50m # 900271 | 1m x 25m # 900275 | 0,65m x 25m # 900276

PrimaCover Standard

Excellent protection against dirt, moisture, rolling material and falling tools during building, renovation and maintenance work. Suitable for various dry surfaces.

- Properties:
- Anti-slip
 - Liquid proof
 - Impact absorbing
 - Self-adhesive
 - Re-usable
 - Made from recycled polyester fibres

- Application:
- For all completely dry surfaces
 - Suitable for floors and stairs



Universal application (180gr/m²)

2m x 50m # 900031 | 1m x 50m # 900030 | 1m x 25m # 900032 | 0,65m x 25m # 900033

PrimaCover Robust

Protects against damage from debris, falling tools, building stamps, water and paint, both indoors and outdoors. Especially developed for prefabricated concrete elements and other substrates that are subjected to heavy loads during the construction and renovation process.

- Properties:
- Extra strong
 - Liquid proof
 - Anti-slip
 - Self-adhesive
 - Impact absorbing

- Application:
- For prefab and concrete elements
 - Suitable for floors and stairs
 - For indoor and outdoor use



For heavy loads indoors and outdoors (300gr/m²)

2m x 25m # 900035 | 1m x 25m # 900034

PrimaCover Active

Safe breathable protection fleece for freshly laid and recently treated surfaces of natural stone, exposed concrete, etc. Provided with a membrane on top, that allows moisture to escape and prevents the penetration of liquids.

- Properties:
- Breathable (1.2l/m²/24h)
 - Liquid proof
 - Anti-slip
 - Self-adhesive
 - Impact absorbing

- Application:
- For freshly laid and recently treated surfaces of natural stone, exposed concrete, etc.
 - Suitable for floors and stairs



Breathable

2m x 50m # 900045 | 1m x 50m # 900044 | 1m x 25m # 900046

PrimaCover Evapo

Vapour-open protection fleece for moisture-sensitive surfaces such as ceramic tiles and wooden floors. A special membrane allows moisture to escape from underneath and prevents liquids from penetrating.

- Properties:
- Vapour-open (70g/m²/24h)
 - Liquid proof
 - Anti-slip
 - Self-adhesive
 - Impact absorbing

- Application:
- Specially developed for newly laid and treated floors
 - For ceramic tiles and wooden floors
 - Suitable for floors and stairs



Vapour-open

1m x 50m # 900039 | 1m x 25m # 900040

PrimaCover Paint

Painter fleece is available in many quality grades. PrimaCover Paint is a high-quality, moisture-absorbing and multifunctional painter fleece. The underside is coated with a robust non-slip PE film, which prevents moisture penetration.

- Properties:
- Absorbent
 - Liquid proof
 - Anti-slip
 - Impact absorbing
 - Re-usable

- Application:
- For all completely dry surfaces
 - For painting work



High-quality absorbing protection fleece

0,98m x 50m # 900047

PrimaCover Absorb

Self-adhesive liquid proof protection fleece. Provided with a viscose top layer, enabling it to absorb large quantities of fluid. Even resistant to solvent-based fluids such as lacquers, adhesives and degreasers. Ideal for painting, assembly and maintenance work.

- Properties:
- Enormous absorption capacity (1 liter/m²)
 - Anti-slip
 - Self-adhesive
 - Impact absorbing
 - Lint-free
 - Liquid proof and solvent-resistant

- Application:
- For all completely dry surfaces
 - Suitable for floors and stairs



Highly absorbent, lint-free and resistant to solvents

1m x 25m # 900037

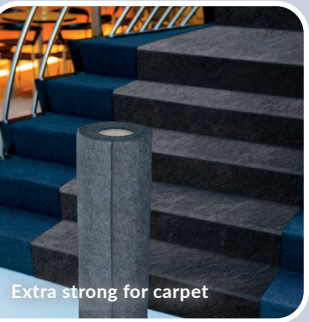
PrimaCover Carpetsaver



PrimaCover Carpetsaver was specially developed for covering carpets. This solid self-adhesive protection fleece with a bottom layer of impermeable film, offers excellent protection during building work, renovation, plastering and painting.

- Properties:
- Extra strong due to the combination of LDPE film with a top layer made of recycled polyester fibres
 - Protects against mechanical damage
 - Liquid proof
 - Self-adhesive
 - Easy to use
 - Repositionable
 - Reliable solvent-based adhesive

- Application:
- Especially developed for carpets
 - Suitable for floors and stairs



Extra strong for carpet

1m x 50m # 900014 | 0,65m x 50m # 900013

PrimaCover Hardfloorsaver



Strong, reliable substrate for climbing materials. Top layer of non-slip polyester fleece with an under layer of impenetrable self-adhesive film. Ideal for project design, construction, finishing, renovation and painting.

- Properties:
- Extra strong due to the combination of LDPE film with a top layer made of recycled polyester fibres
 - Protects against mechanical damage
 - Liquid-proof and absorbent
 - Easy to use
 - Self-adhesive

- Application:
- Suitable for floors and stairs
 - For all completely dry surfaces



Extra strong and non-slip, for hard surfaces

1m x 25m # 900514 | 0,65m x 25m # 900515

PrimaCover Standard FR

Flame retardant self-adhesive protection fleece for hard dried surfaces. Protects floors and stairs against moisture, paint and mechanical damage. Ideal during construction, finishing, renovation and (technical) maintenance at locations where flame retardant protection is required or desired.

- Properties:
- Flame retardant (EN 13501-1 Bfl s1)
 - Liquid proof
 - Impact absorbing
 - Self-adhesive
 - Re-usable

- Application:
- For locations with fire safety requirements
 - Suitable for floors and stairs



Flame retardant

1m x 25m # 900601 | 0,65m x 25m # 900600

PrimaCover Defend

Thick, heavy-duty felt floor covering for maximum protection of various surfaces. Prevents mechanical damage caused by debris, pressure loads, moving equipment, etc.

- Properties:
- 100% vapour-open, hence suitable for damp surfaces, natural stone and parquet
 - Easy to customise
 - Very high mechanical protective effect, even with point loads
 - Re-usable
 - Practically lint-free



Available in rolls and as individual panels

1m x 25m # 900761 | 0,80m x 1,20m # 900029